



PARAGON Technologie GmbH, Systemprogrammierung

Heinrich-von-Stephan-Str. 5c ● 79100 Freiburg, Germany

Tel. +49 (0) 761 59018201 ● Fax +49 (0) 761 59018130

Internet [www.paragon-software.com](http://www.paragon-software.com) ● Email [sales@paragon-software.com](mailto:sales@paragon-software.com)

---

# WINDOWS 7 MIGRATION TO 3TB DRIVE WITH PARAGON DRIVE COPY 11 PROFESSIONAL

HOW TO

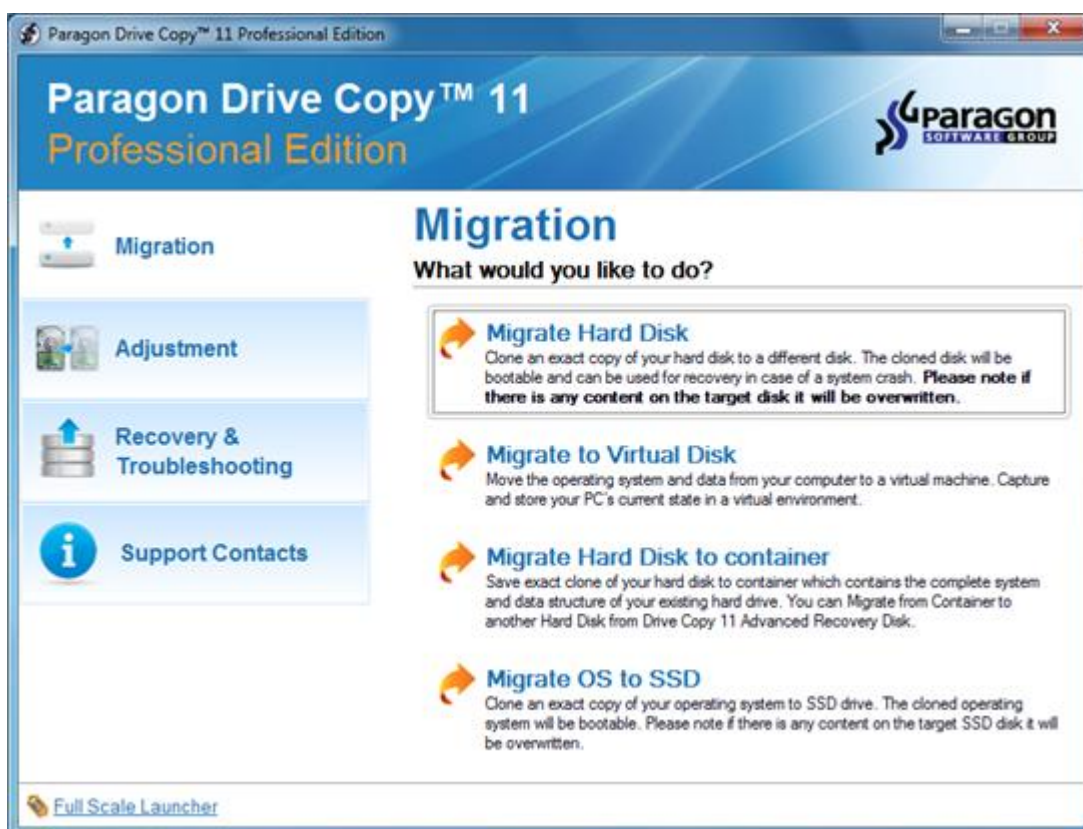


## INTRODUCTION

This document is intended to show how migrate your Windows 7 based operating system to the 3TB drive with Paragon Drive Copy 11 Professional. The program is able to perform almost all operations automatically, including creation of a special GPT/MBR mixed partitioning scheme. All you need after volumes copying is to install a special driver, Paragon GPT Loader, to gain access to the disk space beyond 3TB limit.

## OPERATION STEPS

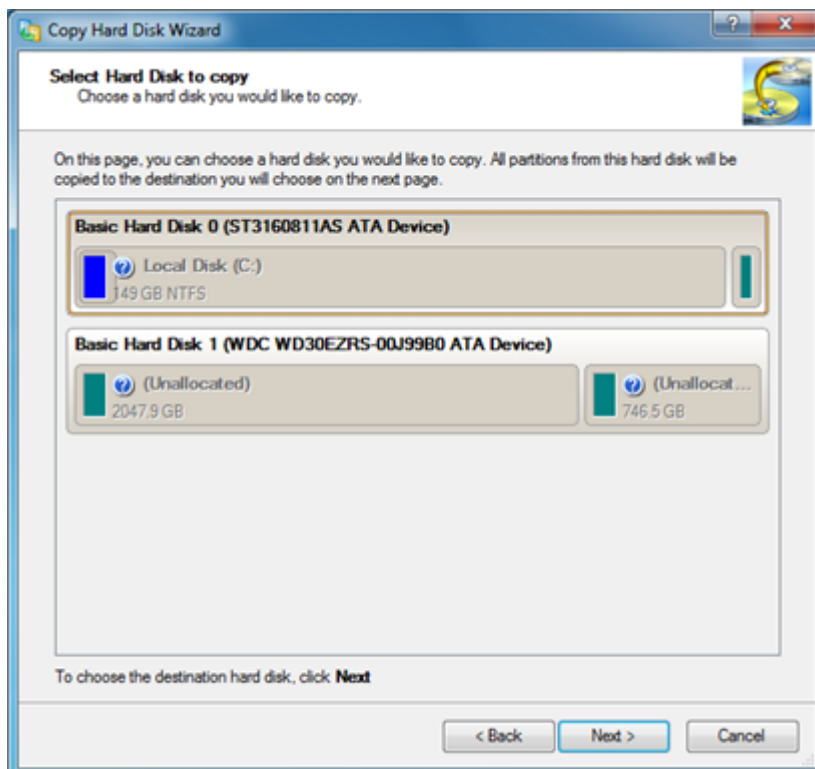
1. Launch Paragon Drive Copy 11 Professional



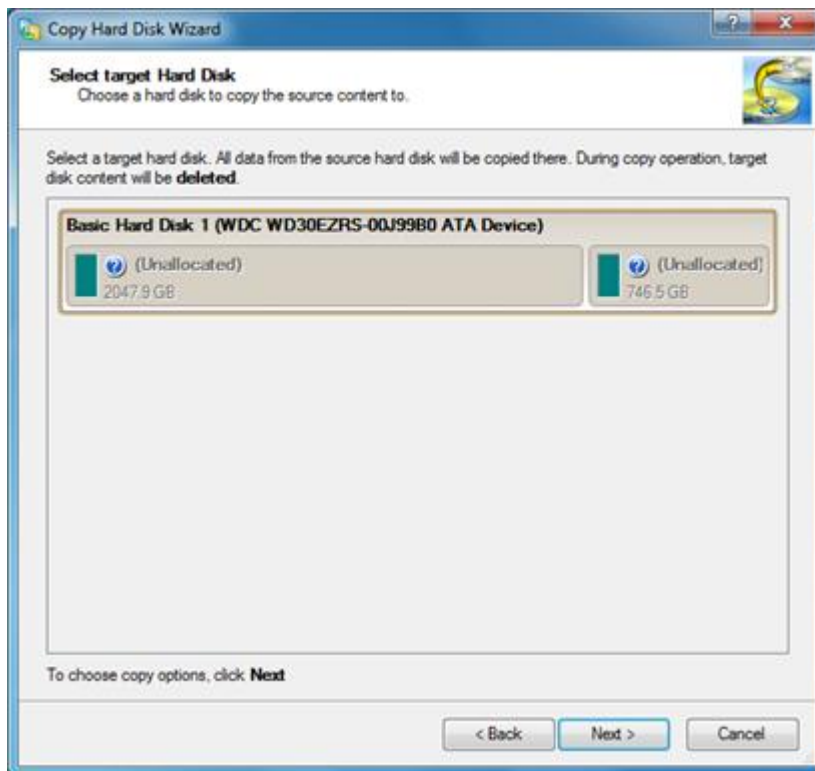
2. Click the **Migrate Hard Disk** menu option in the **Migration** menu.



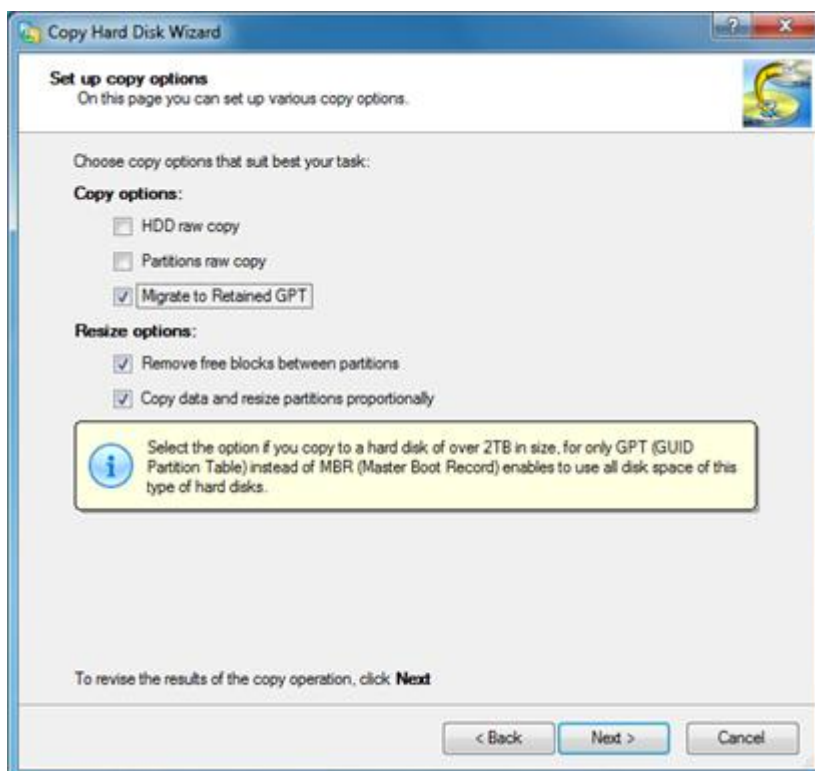
3. The **Copy Hard Disk Wizard** welcome screen will open. Click **Next**.



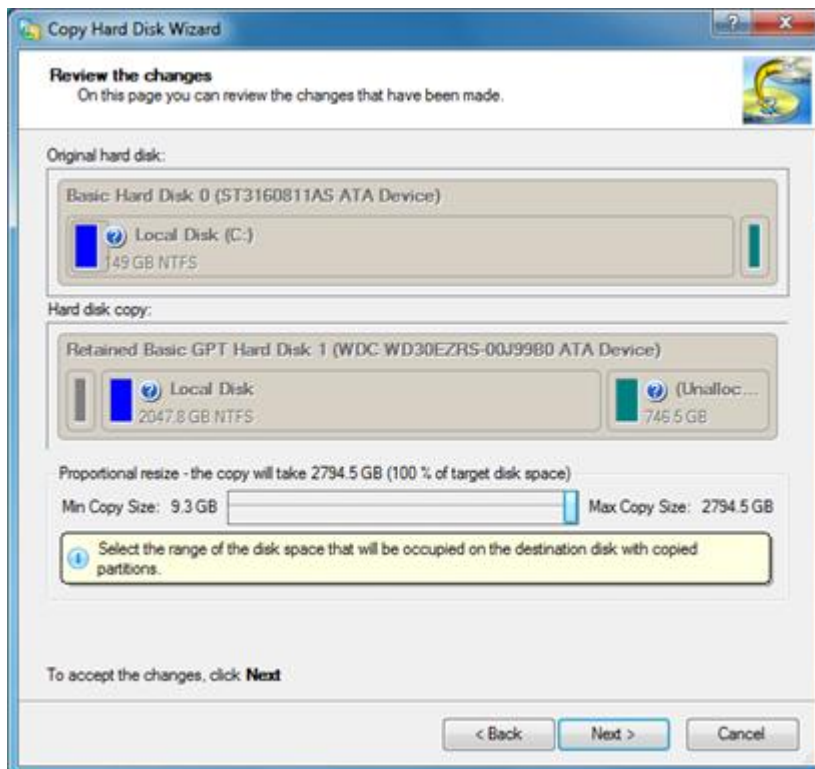
4. Select your actual system disk as a source for copy.



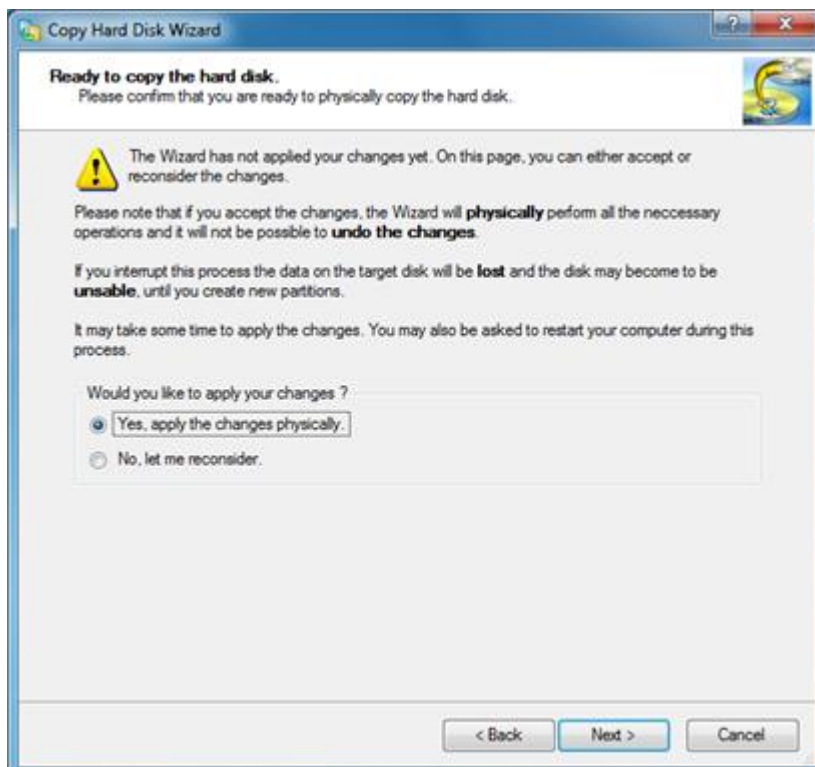
5. Select your second 3TB disk as a target for copy.



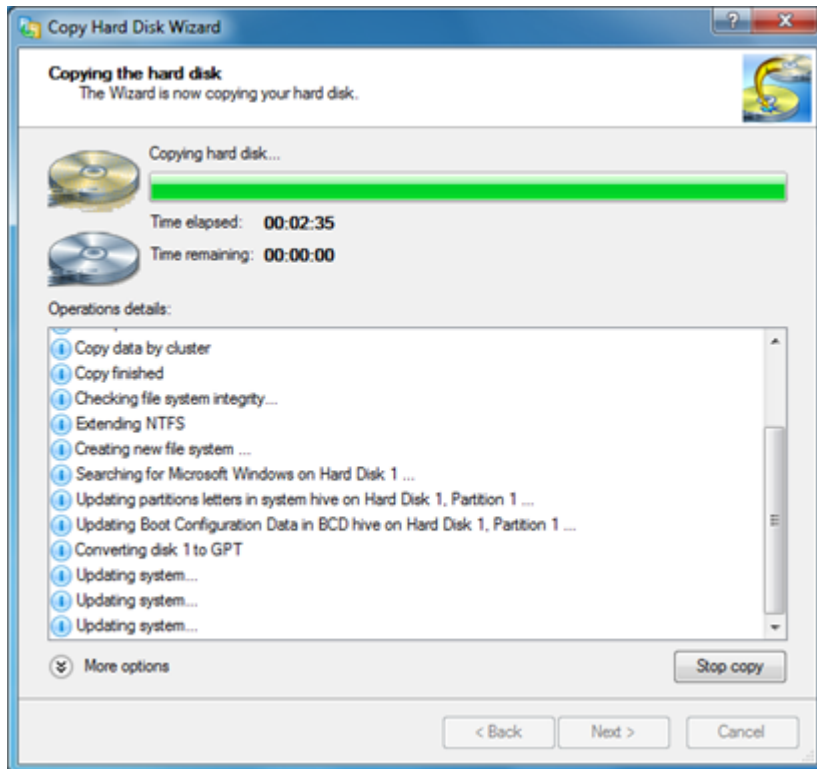
6. Review the copying options. Do not forget to mark the **Migrate to Retained GPT** checkbox and click **Next**.



7. Now you can change the size of the resulting partition if you want. Also notice that you still do not have access to the remaining disk space on the 3TB disk beyond the 2TB limit.



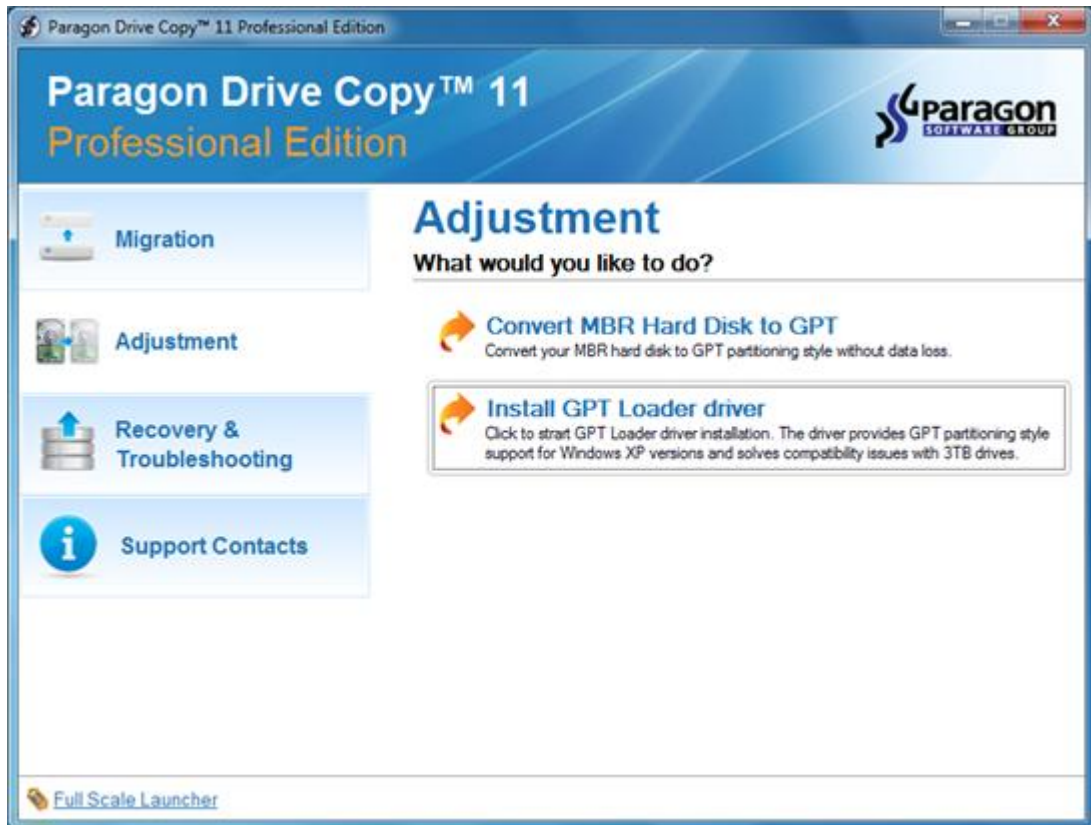
8. Apply the changes physically by clicking **Next**.



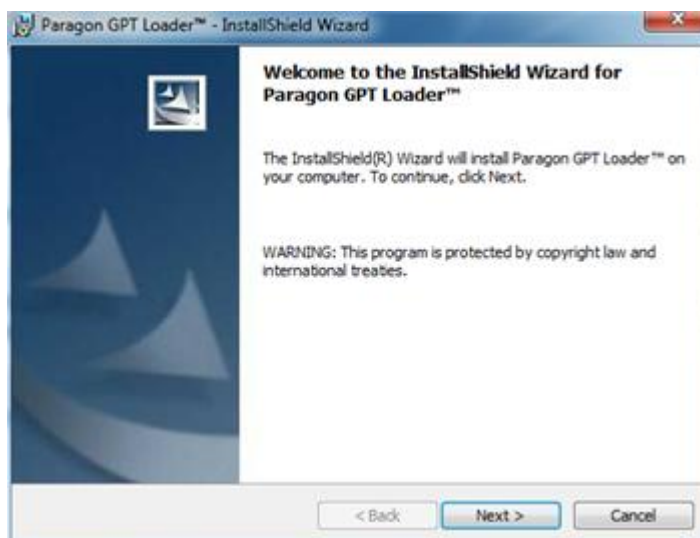
9. The wizard will perform all operations.



10. Finish the wizard. Now you have your volumes copied and you can shut down the computer, remove the original disk and start Windows from the 3TB one.



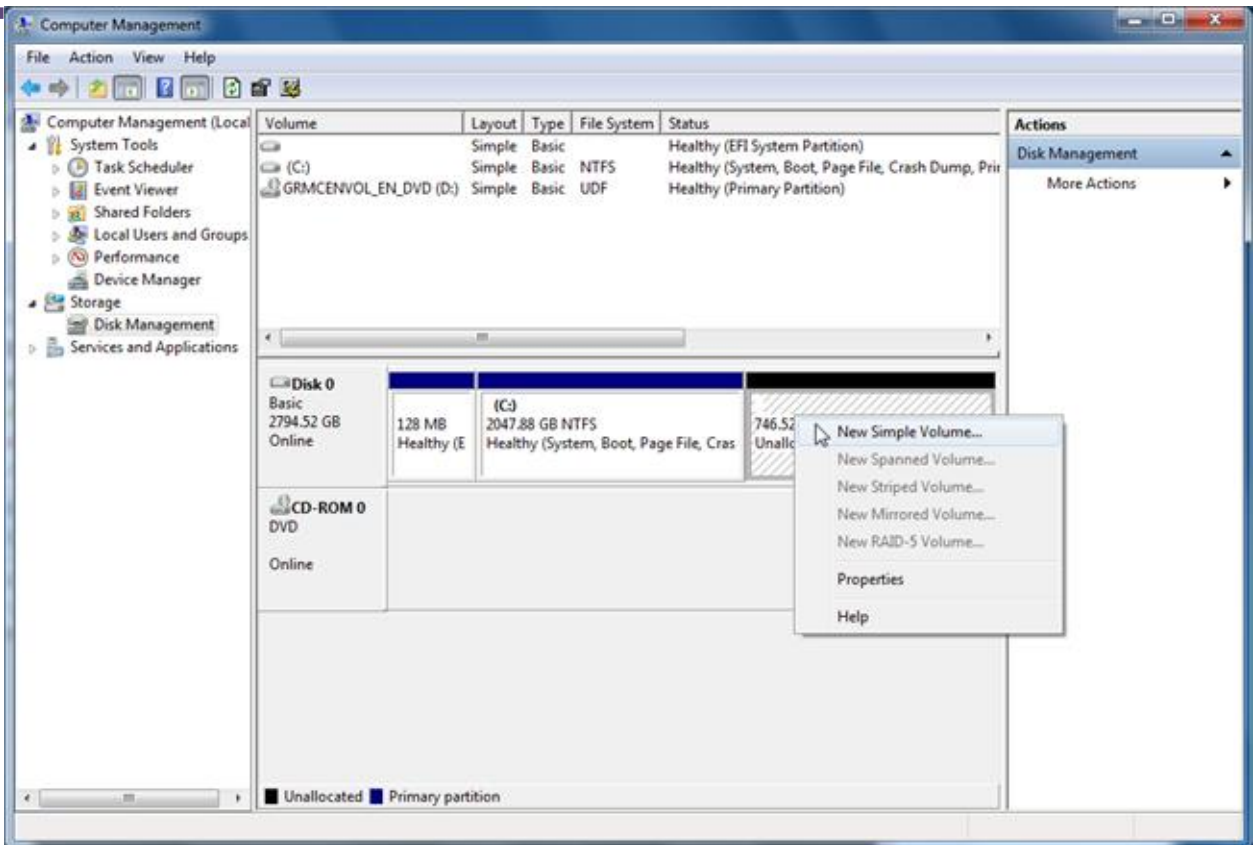
11. Again launch Paragon Drive Copy 11 and select the **Install GPT Loader driver** menu option in the **Adjustment** menu.



12. Install the driver by completing the standard installation procedure.



13. Agree with proposal and reboot the system to activate the driver.



14. After system restart you will finally get access to the remaining disk space on the 3TB drive. For example you will be able to create a volume using **Windows Disk Management**.

