



PARAGON Technologie GmbH, Systemprogrammierung

Heinrich-von-Stephan-Str. 5c ● 79100 Freiburg, Germany

Tel. +49 (0) 761 59018201 ● Fax +49 (0) 761 59018130

Internet www.paragon-software.com ● Email sales@paragon-software.com

PARAGON MIGRATE OS TO SSD

REVIEWER'S GUIDE

PRODUCT CONCEPT

PRIMARY AUDIENCE

Paragon Migrate OS to SSD is a handy solution for Windows based system transfer to another disk, even of a smaller capacity. This solution consists of one convenient wizard, on its several windows you can set the parameters of the future migration up and perform the operation.

As capacity of modern hard disk drives is growing continuously and they become more affordable, the large number of users faces the problem of existing software environment migration during computer upgrade. One simple solution will have the high demand among these users, notably who need to transfer the system fast and without any fuss and bother. Another important moment is introduction of Solid State Drives for a mass users sector. Despite that their overall capacity is smaller than the common HDD one, their speed and access time characteristics make them the best choice for netbook and notebook users. The migration utility, which takes SSD specifics into account and is able to transfer the system from big HDD to small SSD can be very useful.

Paragon Migrate OS to SSD is intended to be such solution. It should fulfill demands of users with the following problems:

- Copying system from smaller HDD to bigger one;
- Copying system from bigger HDD to smaller SSD;

Thus the possible audience is very broad:

- Home users;
- Small office users, who do not have support service;

The key differentiators of Paragon Migrate OS to SSD:

- Simplicity;
- Convenience;
- Partitions resize capability;
- Alignments awareness;
- Microsoft Reserved Partition awareness;
- File exclusion capability;
- Hot copy, without system restart;

These qualities are important for those who need a convenient way to migrate Windows system from one disk to another, but are not willing to look into technical peculiarities – that's the primary audience of Paragon Migrate OS to SSD.

GETTING STARTED

RECOMMENDED TARGET ENVIRONMENT

Paragon Migrate OS to SSD can operate smoothly on different computer configurations. Here are listed only necessary requirements:

- It's a Windows 2000 or later computer with two hard disk drives or HDD and SSD;
- You are to be logged in as a system administrator to install Paragon Migrate OS to SSD;

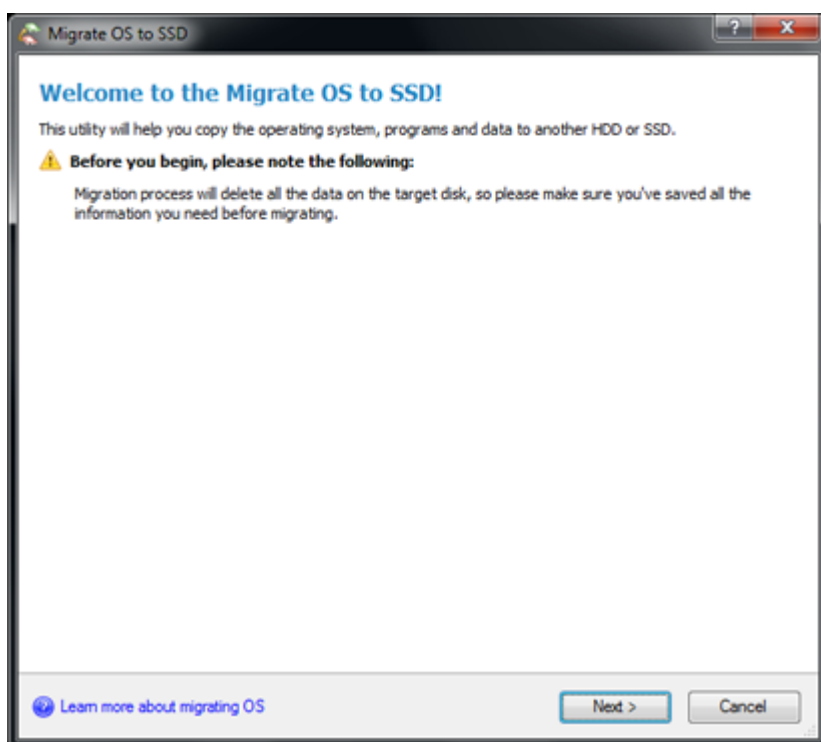
MIGRATE OS TO SSD INSTALLATION

The setup utility has the standard user interface and set of installation steps.

USING PARAGON MIGRATE OS TO SSD

After program installation you can launch the program either via the programs list in the Windows Start menu or by clicking the corresponding shortcut on Desktop.

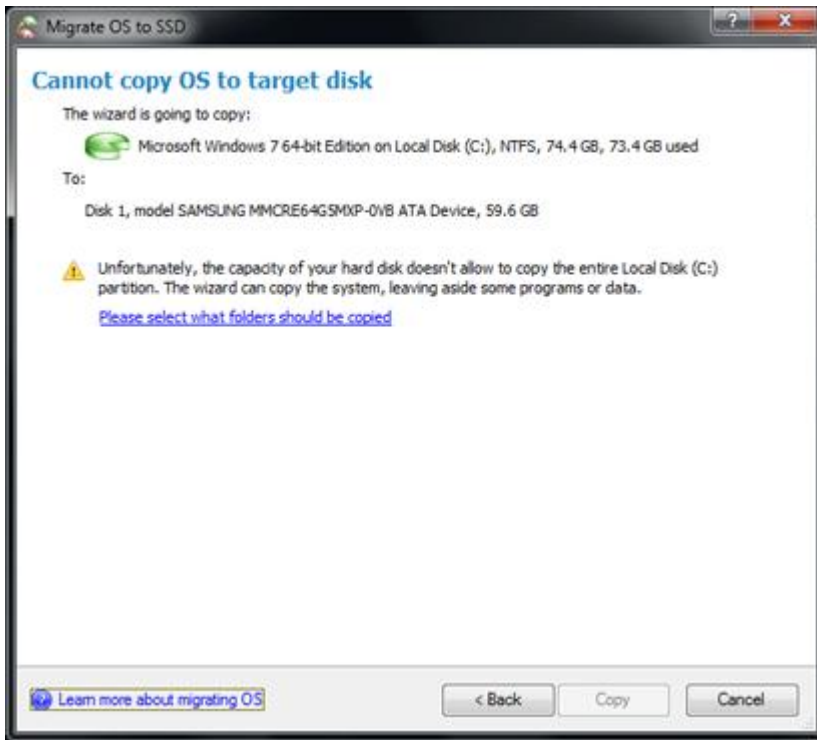
On the wizard welcome screen notice the warning about data on the second disk drive. Accordingly to the program logic all data on this drive will be overwritten by copying data from the source one. Thus if you have any important information on the second drive, you need to save it somewhere else.



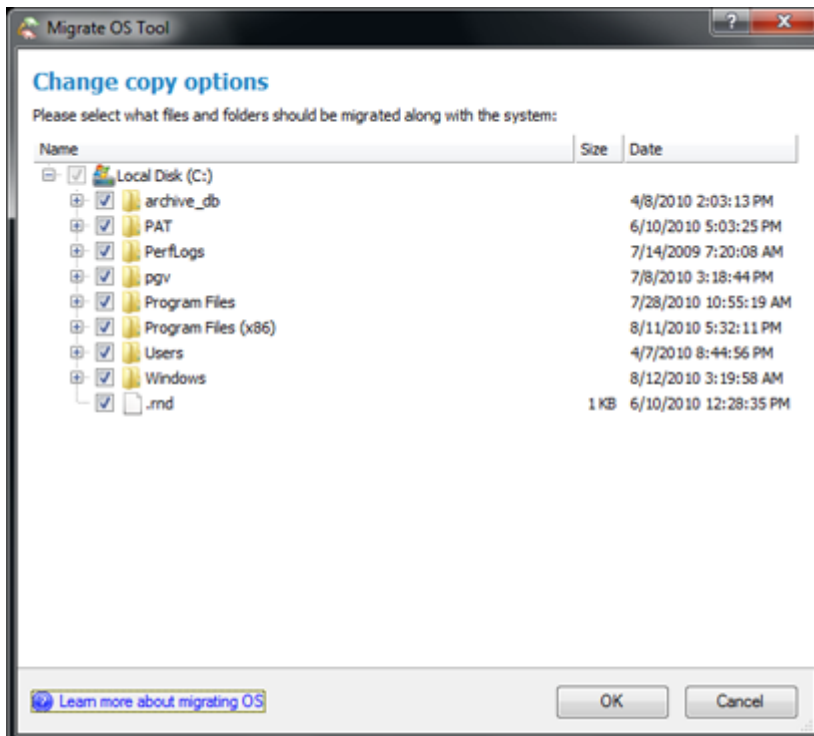
By clicking on the link at the bottom left corner you can open a tip-window with useful information about the tool.

If you proceed with the wizard, the program will analyze the disk configuration of your computer and search for any system volumes.

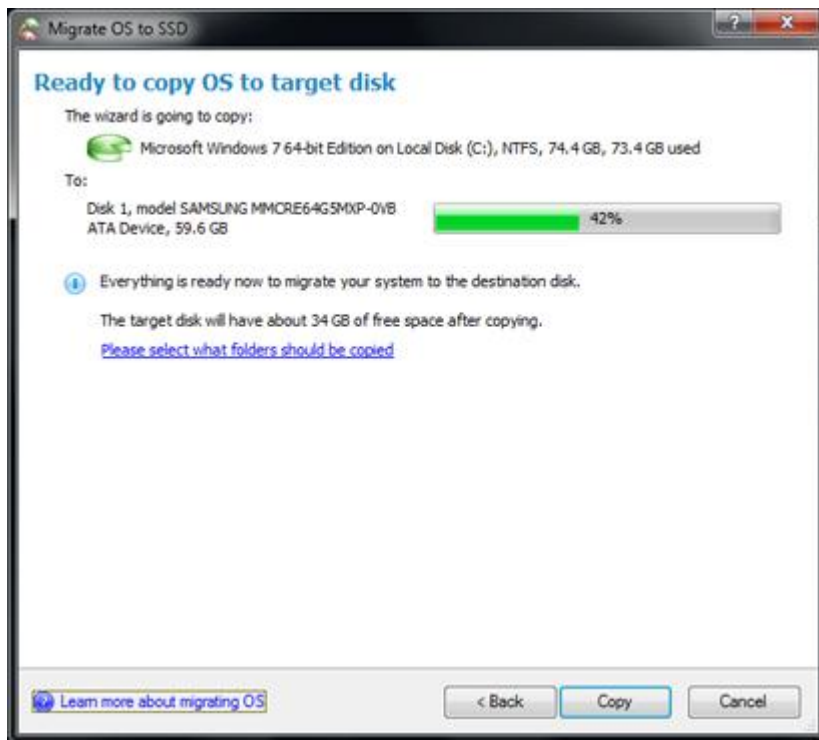
If it succeeds you will be proposed with possible scenario of migration. You can either agree and perform the operation or cancel it.



Usually SSD is smaller than an ordinary hard disk drive, so if you have the disk full of data, you will need to exclude some of it before the migration. We propose to exclude redundant video and media files. On the additional window you can specify which files and folders will be excluded during migration. This option is also useful in case you need to reduce the used space on the resulting partition or copy system to a smaller hard drive than the original one.



The program will count the amount of excluded data and enable copy.



After migration shutdown the computer, remove the source drive, make the remaining drive bootable in BIOS and restart the computer. Your migrated system will boot after some time.

SUMMARY

Paragon Migrate OS to SSDs is a solution for migration of Windows based system to another HD/SSD, even of a smaller capacity. It automatically detects OS, defines the best settings of the process and can exclude files and folders during migration. Using this tool you can easily and rapidly transfer your system to any drive.